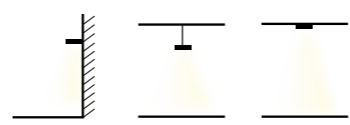




SIMBOLOGIA / SIMBOLOGY pag. 8-9



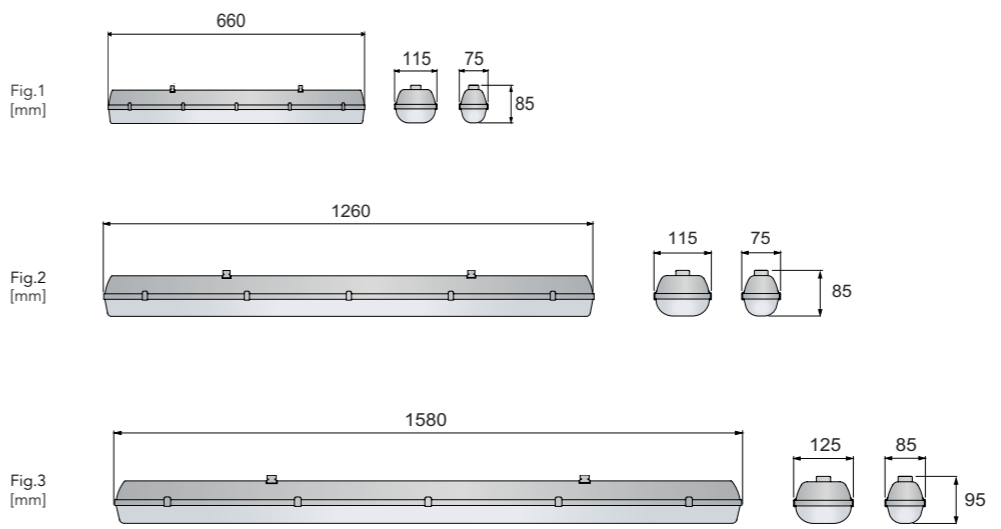
OPZIONI DI INSTALLAZIONE / INSTALLATION OPTIONS



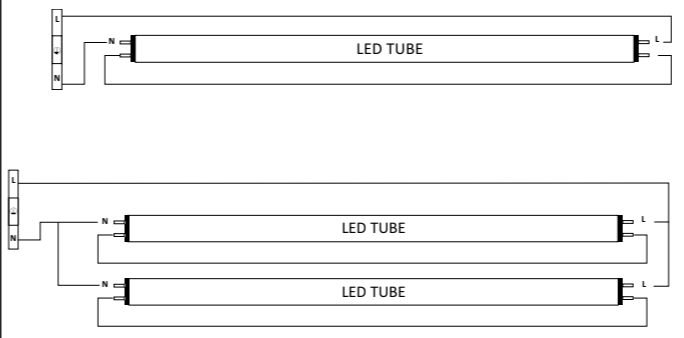
COLORI DISPONIBILI / AVAILABLE COLOURS



VERSIONI DISPONIBILI / AVAILABLE VERSIONS



SCHEMA ELETTRICO / WIRING DIAGRAM



# LED LIFE



Plafoniera stagna realizzata in ABS/PS, ideale per installazioni interne ed esterne, aree civili ed industriali, magazzini, garages.

Waterproof ceiling luminaire, made of ABS/PS, ideal for indoor and outdoor installations, warehouses, civil and industrial areas.

**Corpo:** ABS con elevato grado di resistenza agli urti grazie alla struttura rinforzata.

**Body:** ABS with high degree of impact resistance thanks to the reinforced structure.

**Schermo:** in PS/Polistirene anti ingiallimento, stampato ad iniezione, autoestinguente ed infrangibile.

**Screen:** anti-yellowing PS/Polystyrene, injection molded, self-extinguishing and unbreakable.

**Riflettore:** lamiera in acciaio verniciato bianco.

**Reflector:** white painted steel sheet.

**Alimentazione:** tensione diretta per tubo LED.

**Power supply:** direct voltage for LED tube.

**Sistemi di fissaggio:** ganci di chiusura e clips in acciaio inox fornite di serie per fissaggio diretto parete/soffitto o in sospensione, pressacavo M16/20.

**Fixing systems:** stainless steel locking hooks and clips supplied as standard for direct wall/ceiling or suspended fixing, M16/20 cable gland.



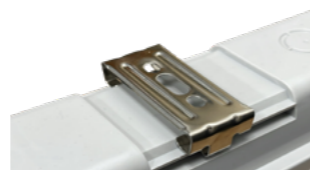


**DETTAGLI / DETAILS**

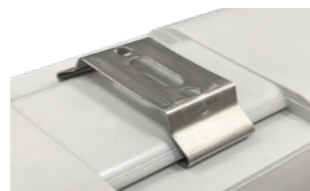
**Sistema di fissaggio:** Ganci in acciaio inox per fissaggio parete/soffitto e sospensione **forniti di serie**

**Mounting system:** Stainless steel hooks for suspension/wall/ceiling fixing **supplied as standard**

LEDLife 1x



LEDLife 2x

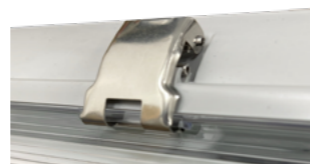


**Clips di chiusura in acciaio inox forniti di serie**  
Stainless steel closure clips supplied as standard

LEDLife 1x



LEDLife 2x



<b>CODICE</b> Code	<b>DESCRIZIONE</b> Description	<b>POTENZA</b> Power(W)	<b>PORTALAMPADA</b> Lampholder	<b>ESECUZIONE</b> Execution	<b>FIGURA</b> Figure	<b>B</b> (mm)	<b>PESO NETTO</b> Net weight(Kg)
321617.118	TUBO LED 1x60cm T8		G13	CN	1	660	0,66
321617.136	TUBO LED 1x120cm T8		G13	CN	2	1260	1,50
321617.158	TUBO LED 1x150cm T8		G13	CN	3	1580	1,61
321617.218	TUBO LED 2x60cm T8		G13	CN	1	660	0,98
321617.236	TUBO LED 2x120cm T8		G13	CN	2	1260	1,55
321617.258	TUBO LED 2x150cm T8		G13	CN	3	1580	2,05
LAM6104.0010	TUBO LED 840 G13 60cm	8W					
LAM6104.0020	TUBO LED 840 G13 120cm	12W					
LAM6104.0022	TUBO LED 840 G13 150cm	18W					

**ATTENZIONE / ATTENTION**

Tubo Led: se non diversamente indicato, verrà utilizzato lo schema elettrico indicato nella pagina precedente.  
Led Tube: unless otherwise indicated, it will be used the wiring diagram indicated on the previous page.